

Leaf Blowers in Rye

Impacts and Solutions

PRESENTATION TO RYE CITY COUNCIL

BY

RYE SUSTAINABILITY COMMITTEE

August 8th, 2018



Rye's Leaf Blower Law

- In May 2008, the City Code was amended to prohibit the use of leaf blowers of any kind between May 1 and September 30.
- New law was passed in response to resident concerns about:
 - the quality of our air
 - the health of our community
 - Noise disruptions that impact our quality of life

Rye's Leaf Blower Law in 2018 ... Time for a Check-up?

What's a Leaf Blower?



Most Common

- ▶ Gas-powered (two-stroke engine)
- ▶ Electric (plug in corded or battery powered)

Gas

- ✓ Pros:
 - More powerful than electric
- ✓ Cons:
 - Known environmental polluter
 - Emit smog forming air pollutants
 - Noisier than electric blowers

Electric

- ✓ Pros:
 - No polluting gas fumes
 - Generally quieter
- ✓ Cons:
 - Still dependent on fossil fuels
 - Less powerful than gas blowers

So ... Why are Leaf Blowers a Problem?

- Air Quality
- Noise Impacts
- Health Problems
- Community Impacts

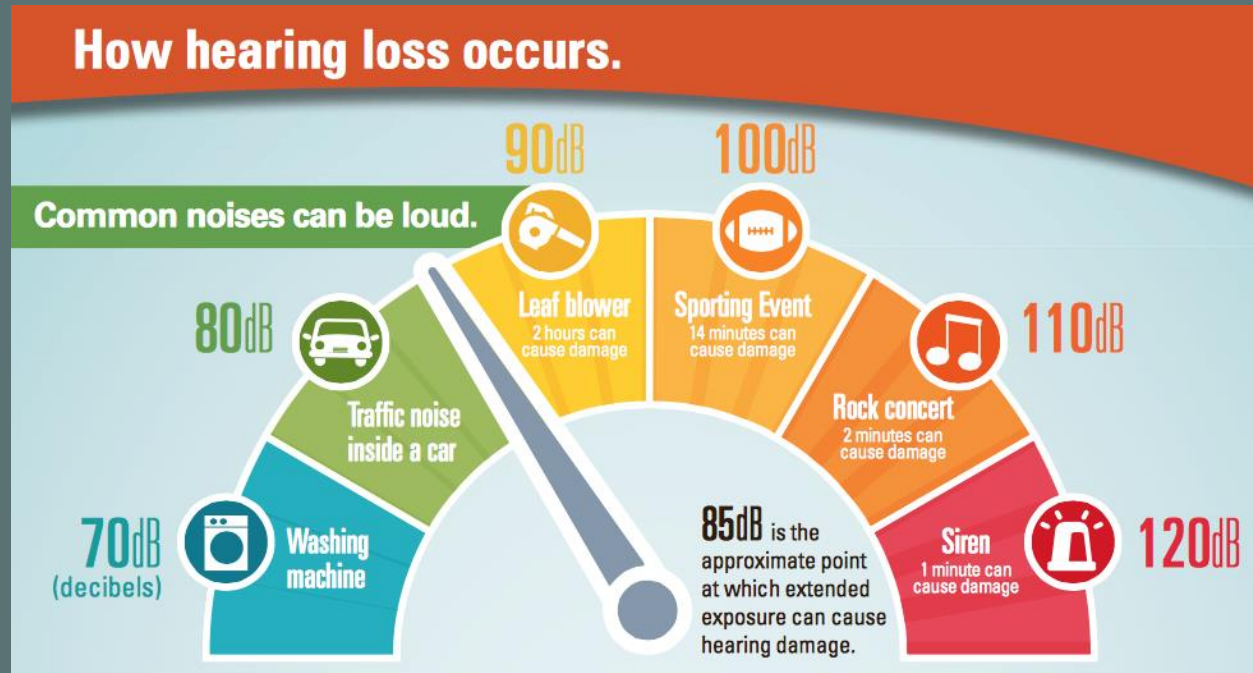


Air Quality



- Smog
- Particulates. What Kind?
 - Dog feces
 - Lawn chemicals such as pesticides, herbicides, fungicides
 - Heavy metals
 - Dust
 - Pollen
 - Fungal spores

Noise Impacts



Noise impacts include:

- Intensity levels
- Noise levels
- Duration

Health

- Hearing Damage
- Respiratory Issues
- Eye Damage
- Of Special Concern:
Children and Pets



Community Concerns



- Air Pollution
- Soil Erosion and Compaction
- Plant Degradation

Solutions

- Alternative Lawn Equipment
- Leaf Mulching
- Grass Clipping Mulching
- Changing Habits
- Enforcement of Existing Law

